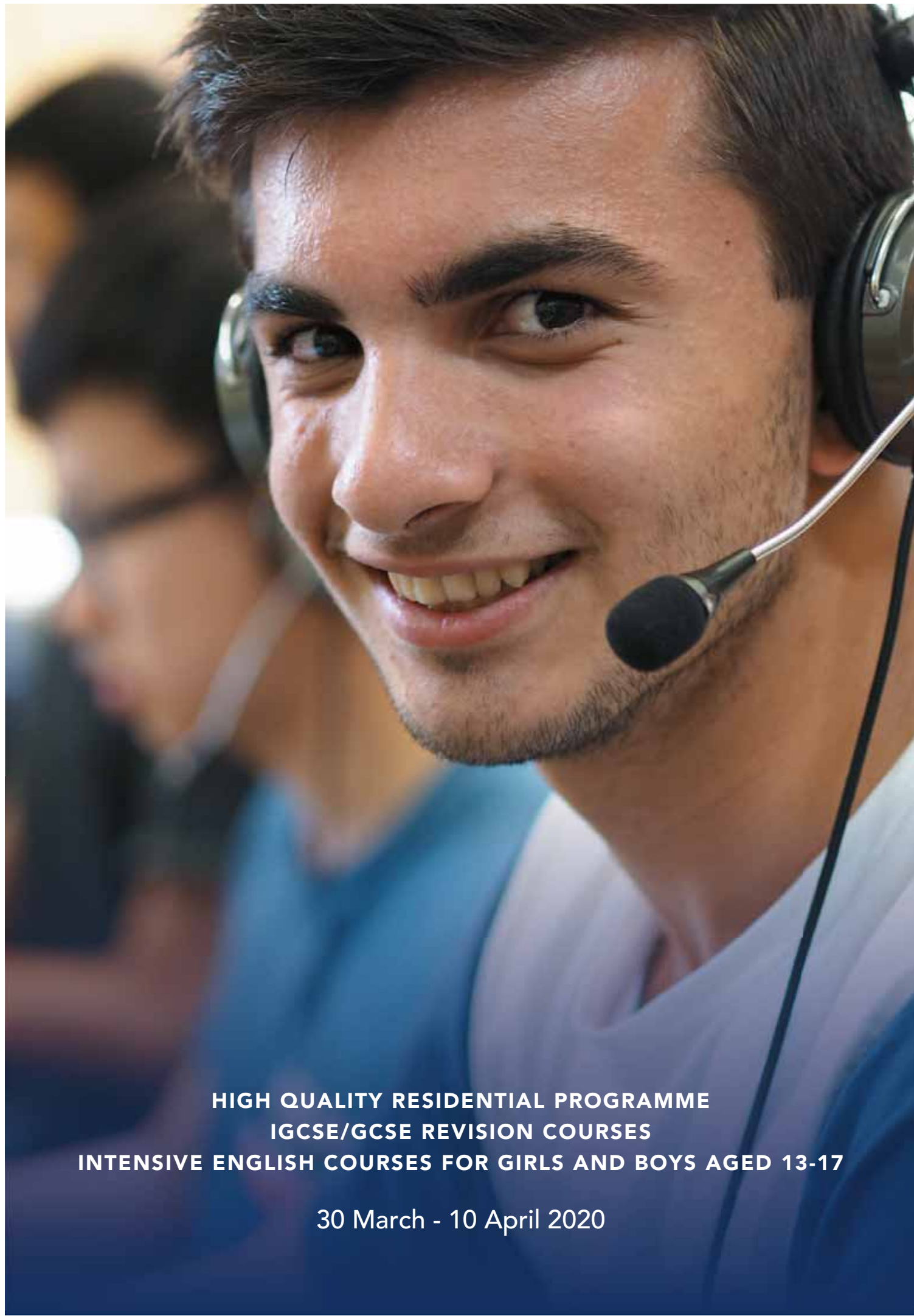




SHERBORNE SPRING

Spring

IGCSE/GCSE Revision
English Language Courses



**HIGH QUALITY RESIDENTIAL PROGRAMME
IGCSE/GCSE REVISION COURSES
INTENSIVE ENGLISH COURSES FOR GIRLS AND BOYS AGED 13-17**

30 March - 10 April 2020



SHERBORNE SPRING

Our aim is to give each student a positive, memorable I/GCSE revision or English language learning experience. All programmes are organised and run by Sherborne International itself, based on the same high quality and success rate of our year-round schooling, and using our own expertise and facilities.

Regular classes are small with a maximum of eight students and with tailored revision classes, tuition is 1-1 or with a maximum of two students. This allows each student to receive individual guidance, focused on his/her needs.

Each study day here includes lessons from 0910-1530; afternoon sports and activities programme; homework or exam practice sessions; and relaxing with recreational evening activities.

Although all our teachers are experienced in teaching students who do not have English as a first language, and can offer appropriate linguistic help, our revision courses are also ideal for native English speakers looking for a concentrated boost just before their exams.

On completion of the course, students receive a certificate of attendance. Written academic reports are sent to parents with details about the work covered, progress made, achievement, areas to focus on for further improvement and general involvement in the course.

All courses are professionally staffed and organised for students who want to learn in a caring, friendly atmosphere. Parents can relax knowing that their children are safe and receiving the best attention.

We understand that your decision to entrust your child to our care is a really important one and one you need to get right, so we are always ready to hear from you with any questions or concerns you may have.

Of course, if you are able to visit us in advance, you will be assured of a warm welcome.



It gave me a lot of techniques to help me with my revision

Alice

It helped me to get another view from different teachers

Emma

We have a
course
for
you

ALL REVISION COURSES INCLUDE:

- Exam and Study Skills sessions every morning
- Specialist teachers for non-native speakers
- Courses also for native English speakers
- 90 minutes practice papers under exam conditions each evening
- Individual guidance
- Recreational programme

The workload is heavy and total commitment is expected throughout the courses. However, with our help, the student receives a valuable boost at this vital stage.

The emphasis is on understanding and providing the opportunity to cover problem areas in depth. There is constant testing throughout in order to help students develop appropriate exam technique. We want to build students' confidence in their application of knowledge under exam conditions.

5 DAY IGCSE/GCSE REGULAR REVISION

- Small classes – MAXIMUM eight students
- Detailed revision of two listed subjects per week
- 15 lessons – 11.25 hours per subject over 5 days
- Total 30 lessons – 22.5 class hours
- Individual tutor time each week
- Full day excursion on middle Sunday
- Course of one or two weeks

A COURSE FOR YOU

Our tailored revision courses are perfect if you want a revision course in a subject or syllabus we haven't listed. We have many teachers experienced in the demands of different exam boards. We just need the information about the exam board and syllabus of each revision subject chosen so that we can provide a course that will properly match the student's individual needs.

5 DAY IGCSE/GCSE COMBINED REVISION

- 15 lessons in one listed syllabus – MAXIMUM eight students in a class
- 7-8 lessons in two other chosen subjects per week OR 15 lessons in one other chosen subject – individual or maximum two in a class
- Total 30 lessons – 22.5 class hours
- Full day excursion on middle Sunday
- Course of one or two weeks

TOTALLY PERSONALISED REVISION

- Build your own personalised revision course
- Choose your own number of days
- Detailed revision of subject(s) and syllabus of choice
- Individual classes - MAXIMUM two students
- Six lessons per day (4.5 class hours) plus 90 minutes exam practice

INTENSIVE ENGLISH PROGRAMME

- Course of one or two weeks
- For 13-17 year olds
- Small classes – MAXIMUM EIGHT students
- English and different subjects
- 30 lessons – 22.5 class hours each week
- Educational trips included
- Full sports programme
- Evening recreational programme
- Full day excursion on middle Sunday

Our courses emphasise language development for the individual, which is why our classes are so small. The lessons are lively and interesting and all aspects of the English language are covered. Also included in the timetable are subject lessons taught in English including geography, history, science, mathematics, computing, art and drama. The emphasis is on a different type of language rather than the particular subject content. It all provides variety, interest and opportunities for further language development.

Students will increase their vocabulary in different academic settings as well as just general conversation. They will become more confident about using English, especially about speaking it, as emphasis is placed on clear and assured communication.

The programme includes trips to places of interest to broaden students' knowledge and provide further opportunities for using English.

It helped me a lot
Filippo

It helped me to focus on my work
Julien

It was an excellent course and I learned some new things
Varvara

TRAVELLING ALONE?

We can arrange for your child to be met at a number of airports and bring him/her to Sherborne.

The transfer charge is £120 each way per student from London Heathrow, London Gatwick or Bristol.

Please check for prices from other airports. Arrival at Stansted, Luton or London City Airports is not advised because of distance and cost of transfer.

HEALTH AND WELFARE

Our matron is on site every day and on call at night. Students can also see a doctor at a local surgery, though they make a charge for each consultation. The nearest hospital is just a few metres away.

Students who are able to show a European Health Card may be covered by the National Health system, but in any case you are strongly advised to take out travel insurance to cover travel arrangements and valuables as well as health insurance, including dental care in case of emergencies.

At all times, we aim to look after your child as if he/she were our own. There is 24 hour supervision of students and many of our house and teaching staff are trained first aiders.

CLOTHES

Machine washable casual and sports clothes are best for everyday activities – jeans, t-shirts, swimwear, shorts for sports, outdoor sports shoes, trainers, casual shoes and clothes for the variable spring weather conditions in Britain. It is good to have rainwear, warm sweaters and a coat.

Laundry is offered once a week, but it is wise to bring sufficient changes of clothes. Clothes should be labelled clearly with the student's name as they sort their own clothes on return from the laundry and to avoid too much lost property.

Students need to bring two towels and toiletries (soap, toothbrush, toothpaste, shampoo and hairbrush). All bedding is provided.

POCKET MONEY

The price includes everything – practice papers set under exam conditions (revision and exam prep courses), educational visits (English language and exam prep courses), exam and study skills sessions (revision and exam preparation courses), individual tutor sessions each week (revision and exam prep courses), tuition, testing and evaluations, academic report and certificate, learning materials, all meals, snacks, drinks and accommodation, regular excursions, sports and leisure programmes, evening activities, and laundry each week – but students may wish to bring pocket money to purchase souvenirs and presents, for personal shopping or to have additional drinks, sweets or snacks on excursions or in town.

£70 per week should probably be sufficient for most students and we recommend a maximum of £120 per week. It is best to bring pocket money in GB Pounds cash. Pocket money should be handed in on arrival (along with passport and tickets) for safe-keeping. Pocket money can be collected from the office at morning break times on Monday-Friday.



*Everybody is kind, the lessons help
you to improve your English,
you make friends, the meals are tasty*
Bruno

Boarding

Students live in the school, sleeping in our own boarding houses in comfortable furnished bedrooms. Residential house tutors live in the houses with the students. Boys and girls are in separate, well-supervised areas. Some students may enjoy the privacy of their own rooms while many will share two-bedded rooms. Bathrooms are shared.



Meals are served in a pleasant dining hall and are catered for by our own specialised staff who are used to having students from many different countries and religious and cultural backgrounds. The food is cooked on the premises using fresh, locally sourced ingredients. There are at least three hot options per meal, as well as a selection of cold dishes, vegetables, fruits, cheeses and salads. In addition, hot and cold drinks and snacks are available at morning break, during activities and in the boarding houses in the evenings. We cater for any religious, special diets or allergies. Please note your requirements on the registration form.

A very high ratio of residential house and pastoral staff to students ensures the comfort and well-being of each participant. These staff care for the students when they are not in lessons and accompany them on excursions.

RECREATION

Students on all courses are strongly encouraged (and expected) to take full advantage of the afternoon sports to exercise their bodies in order to refresh their minds. The full academic programme is complemented by a variety of daily activities, using the sports centre and playing fields, and a very creative team of trainers. There are educational visits to places of interest on the English language and exam prep course and all students may have a cinema/bowling or equivalent activity. There is a full day excursion on the Sunday between the two weeks for all students present on that day.



DAILY SCHEDULE

0800 - 0900	Breakfast
0910 - 0930	Exam and Study Skills Team Building
0930 - 1100	Classes
1100 - 1130	Break
1130 - 1300	Classes
1300 - 1400	Lunch
1400 - 1530	Classes
1530 - 1615	Individual Tutorials once a week
1545 - 1745	Sports
1745 - 1830	Dinner
1830 - 2015	Exam Practice
1845 - 2000	Prep English Course
2030 - 2045	Meeting
2045 - 2145	Evening Activities
2210	Lights out

Here's a great course with good teachers

Zhizi

Thinking about Enrolling?

Speak to your local agent or educational consultant or have a look at our web page, where you can find the latest information and photograph albums:

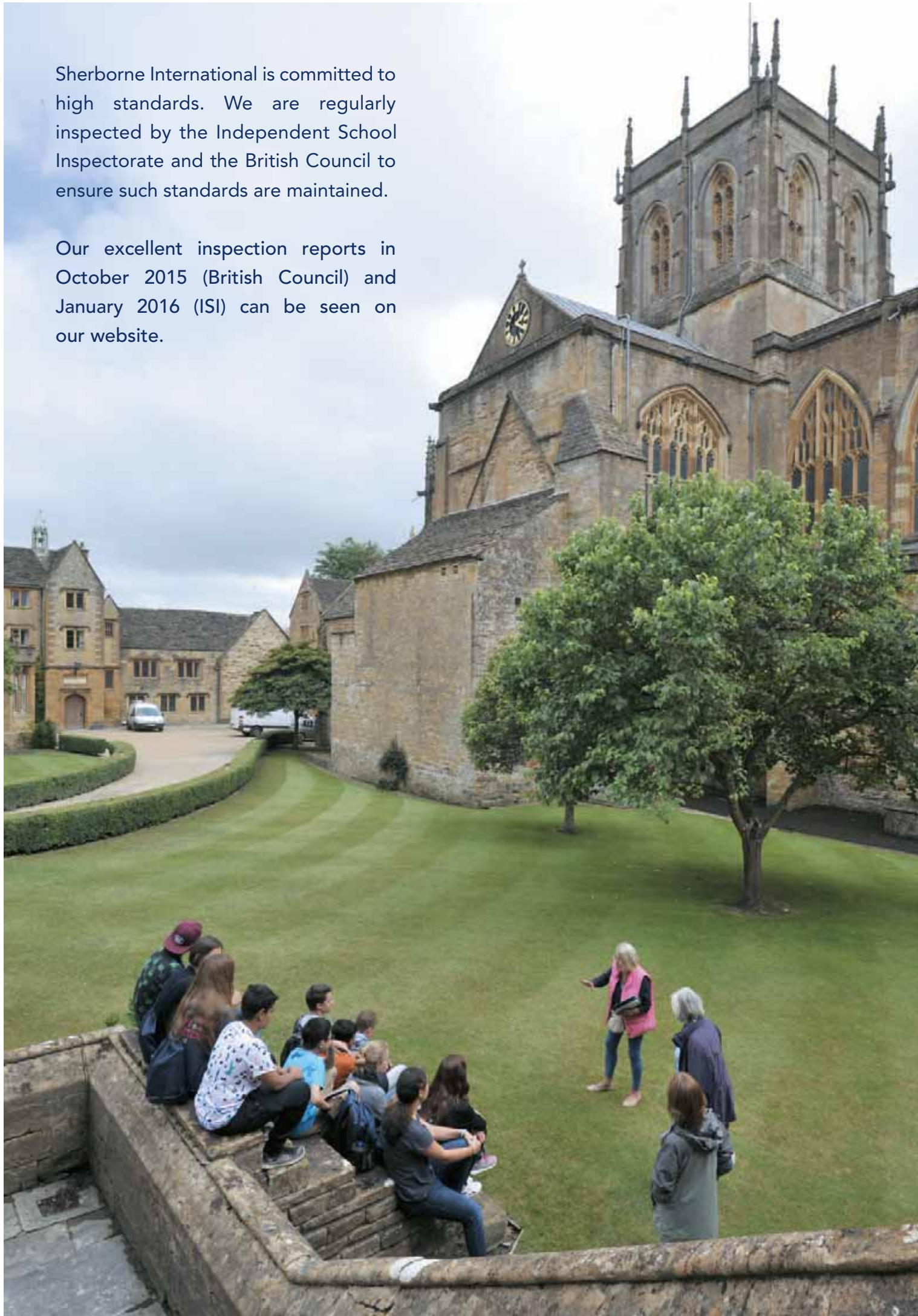
www.sherborne-international.org/spring

Email spring@sherborne-international.org with any questions and/or to check availability of places for the dates you are considering and to ask for a registration form. Once you have decided and confirmed availability, return your completed registration form to us with a non-refundable deposit of £350. This will be deducted from the fee, and the balance is payable thirty days before arrival.



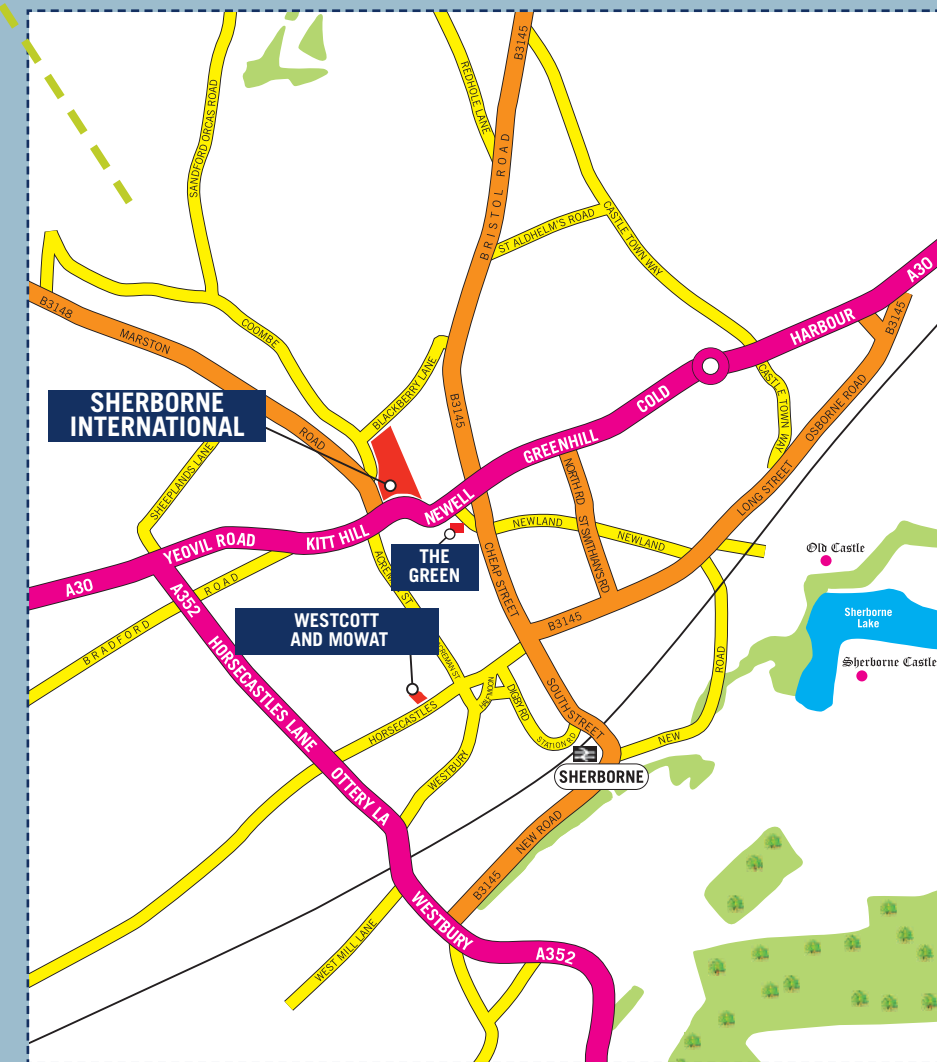
Sherborne International is committed to high standards. We are regularly inspected by the Independent School Inspectorate and the British Council to ensure such standards are maintained.

Our excellent inspection reports in October 2015 (British Council) and January 2016 (ISI) can be seen on our website.



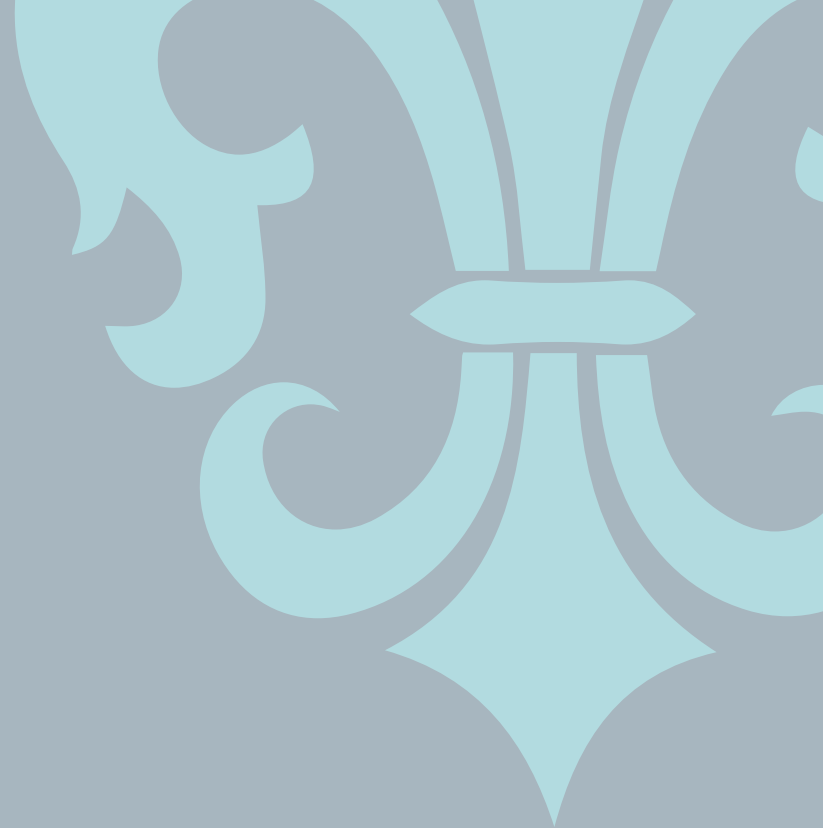
HOW DO I GET THERE?

Sherborne International is ideally situated just over two hours from London Heathrow airport in the clean, quiet and safe rural environment of Dorset. It is on the edge of Sherborne town itself, a small traditional English market town. The friendly nature of the town ensures that it is safe for students to visit the town without staff supervision during designated times. Sherborne has its own railway station on a direct line with frequent trains from London Waterloo station.



This is a good opportunity for you to improve your skills
Varvar





www.sherborne-international.org/spring

SHERBORNE INTERNATIONAL, NEWELL GRANGE, SHERBORNE, DORSET DT9 4EZ, UK
Tel: (UK) 01935 814743 • (International) 44-1935 814743
Fax: (UK) 01935 816863 • (International) 44-1935 816863
E-mail: spring@sherborne-international.org • Website: www.sherborne-international.org

Sherborne School is a registered Charity No. 1081228.

Sherborne International is a living institution and changes may be introduced to the arrangements described in this brochure from time to time. This brochure, therefore, does not constitute in whole or in part any form of contract between Sherborne International, its students or their parents.